



Lewis County 4-H

From the Agent

November is here, which means winter break is right around the corner for students in Lewis County!

I have had a very busy fall season so far. I've attended lots of trainings and have been planning programming for January and beyond! More programming will be added as time progresses.

This newsletter contains a very important announcement about 4-H Camp! Read on to see that announcement!



Lewis County Cooperative
Extension Office
284 Second Street
Vanceburg, KY 41179
(606)796-2732

Lewis County Cooperative
Extension Agent for 4-H
Youth Development
ashley.mhunt@uky.edu
(606)-796-2732

In this Issue:

Pumpkin Art Contest
Results

Vision Board Class

KY Saves Contest

4-H Camp 2025



AMPLIFY
KENTUCKY 4-H

Cooperative Extension Service

Agriculture and Natural Resources
Family and Consumer Sciences
4-H Youth Development
Community and Economic Development

MARTIN-GATTON COLLEGE OF AGRICULTURE, FOOD AND ENVIRONMENT

Educational programs of Kentucky Cooperative Extension serve all people regardless of economic or social status and will not discriminate on the basis of race, color, ethnic origin, national origin, creed, religion, political belief, sex, sexual orientation, gender identity, gender expression, pregnancy, marital status, genetic information, age, veteran status, physical or mental disability or reprisal or retaliation for prior civil rights activity. Reasonable accommodation of disability may be available with prior notice. Program information may be made available in languages other than English. University of Kentucky, Kentucky State University, U.S. Department of Agriculture, and Kentucky Counties, Cooperating. Lexington, KY 40506



Disabilities
accommodated
with prior notification.



Pumpkin Art Contest

On Saturday, September 28th Lewis County 4-H hosted the annual Pumpkin Art Contest. Despite rainy and cool conditions, 30 youth entered pumpkins in this year's contest!



Cooperative Extension Service

Agriculture and Natural Resources
Family and Consumer Sciences
4-H Youth Development
Community and Economic Development

MARTIN-GATTON COLLEGE OF AGRICULTURE, FOOD AND ENVIRONMENT

Educational programs of Kentucky Cooperative Extension serve all people regardless of economic or social status and will not discriminate on the basis of race, color, ethnic origin, national origin, creed, religion, political belief, sex, sexual orientation, gender identity, gender expression, pregnancy, marital status, genetic information, age, veteran status, physical or mental disability or reprisal or retaliation for prior civil rights activity. Reasonable accommodation of disability may be available with prior notice. Program information may be made available in languages other than English. University of Kentucky, Kentucky State University, U.S. Department of Agriculture, and Kentucky Counties, Cooperating. Lexington, KY 40506



 Disabilities accommodated with prior notification.



Vision

Board

Class!

strongly
the moment
at your ch
men, you'll becom



Youth aged 13-18 are invited to
join 4-H Agent Ashley Hunt in
creating your own vision board
for the 2025 year!

Tuesday, January 7, 2025 at
5pm at the Lewis County
Extension Office

Call the Lewis
County Extension
Office at
(606)796-2732 to
sign up!

Spots are limited
and will be filled
on a first come,
first served
basis!



Cooperative Extension Service

Agriculture and Natural Resources
Family and Consumer Sciences
4-H Youth Development
Community and Economic Development

MARTIN-GATTON COLLEGE OF AGRICULTURE, FOOD AND ENVIRONMENT

Educational programs of Kentucky Cooperative Extension serve all people regardless of economic or social status and will not discriminate on the basis of race, color, ethnic origin, national origin, creed, religion, political belief, sex, sexual orientation, gender identity, gender expression, pregnancy, marital status, genetic information, age, veteran status, physical or mental disability or reprisal or retaliation for prior civil rights activity. Reasonable accommodation of disability may be available with prior notice. Program information may be made available in languages other than English. University of Kentucky, Kentucky State University, U.S. Department of Agriculture, and Kentucky Counties, Cooperating. Lexington, KY 40506



Disabilities
accommodated
with prior notification.

KENTUCKY SAVES
2025
PIGGY BANK
DESIGN CONTEST
MONEY SAVED IS A FUTURE EARNED

WHAT: The 2025 Piggy Bank Design Contest is a creative way for youth to learn the importance of saving money and reducing debt.

WHY: To celebrate Kentucky Saves Week.

WHO: Students enrolled in kindergarten-twelfth grade at any public, private, or home school in Lewis County.

When: Entries will be accepted at the Lewis County Extension Office from January 2, 2025 to January 13th, 2025. Judging will take place on January 14th at the Lewis County Extension Office.

How: Participants will submit an original piggy bank to the Lewis County Extension Office.

Recognition: Winners will have their names, grades, counties, and winning piggy banks displayed in the Capitol Rotunda in Frankfort, Kentucky during March and April of 2025. Winners will also receive a certificate.

Entry Requirements:

- The bank cannot exceed 12 inches x 12 inches x 12 inches (1 square foot).
- Piggy banks must be able to hold coins, they must have a slot that has been cut to insert coins.
- Piggy banks must be created or decorated by the youth contestant.
- Plastic or ceramic banks piggy may be used, but must be personally decorated.
- Piggy banks do not have to be in the shape of a pig.
- You MAY use or repurpose other containers.
- Any entry that contains any material deemed offensive or inappropriate by the Lewis County Extension Office, judges, or sponsors will be disqualified.
- By submitting an entry, the parent/legal guardian of the Entrant represents and warrants that the Entry is the original work of the Entrant and that any persons/parties represented in the Entry have given written consent.

Entries will be judged based on originality, creativity, artistic design, and attractiveness.

One (1) Entry per person during the contest period. In the event that multiple entries are received from any one person, the first entry processed will be considered the only valid entry and subsequent entries will be disqualified.

**For questions, please call the Lewis County Extension Office at
(606)796-2732**

**Cooperative
Extension Service**

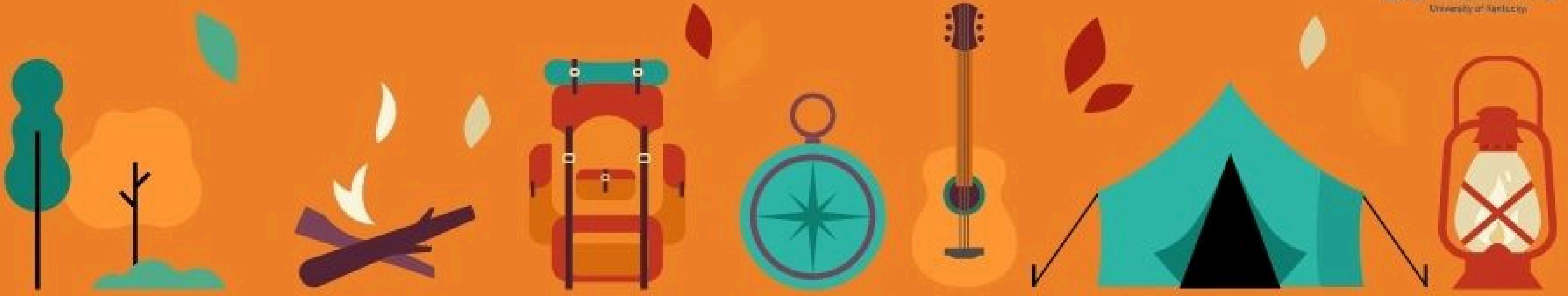
Agriculture and Natural Resources
Family and Consumer Sciences
4-H Youth Development
Community and Economic Development

MARTIN-GATTON COLLEGE OF AGRICULTURE, FOOD AND ENVIRONMENT

Educational programs of Kentucky Cooperative Extension serve all people regardless of economic or social status and will not discriminate on the basis of race, color, ethnic origin, national origin, creed, religion, political belief, sex, sexual orientation, gender identity, gender expression, pregnancy, marital status, genetic information, age, veteran status, physical or mental disability or reprisal or retaliation for prior civil rights activity. Reasonable accommodation of disability may be available with prior notice. Program information may be made available in languages other than English. University of Kentucky, Kentucky State University, U.S. Department of Agriculture, and Kentucky Counties, Cooperating. Lexington, KY 40506



Disabilities
accommodated
with prior notification.



SAVE THE DATE
4-H CAMP
2025
JUNE 23-27

BRACKEN, MASON, ROBERTSON, & LEWIS COUNTIES
REGISTRATION INFORMATION WILL BE AVAILABLE AT A LATER DATE!!!!



Cooperative
Extension Service

Agriculture and Natural Resources
Family and Consumer Sciences
4-H Youth Development
Community and Economic Development

MARTIN-GATTON COLLEGE OF AGRICULTURE, FOOD AND ENVIRONMENT

Educational programs of Kentucky Cooperative Extension serve all people regardless of economic or social status and will not discriminate on the basis of race, color, ethnic origin, national origin, creed, religion, political belief, sex, sexual orientation, gender identity, gender expression, pregnancy, marital status, genetic information, age, veteran status, physical or mental disability or reprisal or retaliation for prior civil rights activity. Reasonable accommodation of disability may be available with prior notice. Program information may be made available in languages other than English. University of Kentucky, Kentucky State University, U.S. Department of Agriculture, and Kentucky Counties, Cooperating. Lexington, KY 40506



Disabilities
accommodated
with prior notice.



**Cooperative
Extension Service**

Agriculture and Natural Resources
Family and Consumer Sciences
4-H Youth Development
Community and Economic Development

MARTIN-GATTON COLLEGE OF AGRICULTURE, FOOD AND ENVIRONMENT

Educational programs of Kentucky Cooperative Extension serve all people regardless of economic or social status and will not discriminate on the basis of race, color, ethnic origin, national origin, creed, religion, political belief, sex, sexual orientation, gender identity, gender expression, pregnancy, marital status, genetic information, age, veteran status, physical or mental disability or reprisal or retaliation for prior civil rights activity. Reasonable accommodation of disability may be available with prior notice. Program information may be made available in languages other than English. University of Kentucky, Kentucky State University, U.S. Department of Agriculture, and Kentucky Counties, Cooperating. Lexington, KY 40506



 Disabilities
accommodated
with prior notification.