



# Lewis County 4-H

To the 4-H'ers

**After a very cold start to the year, we are finally starting to get some spring-like weather!**

**There are a lot of programs for YOU to participate in during the upcoming months! I hope you will take these opportunities and run with them. Try new things and get out of your comfort zone! These programs are perfect for discovering what you are passionate about!**

**I hope you have a great spring and that you'll decide to take part in 4-H events!**



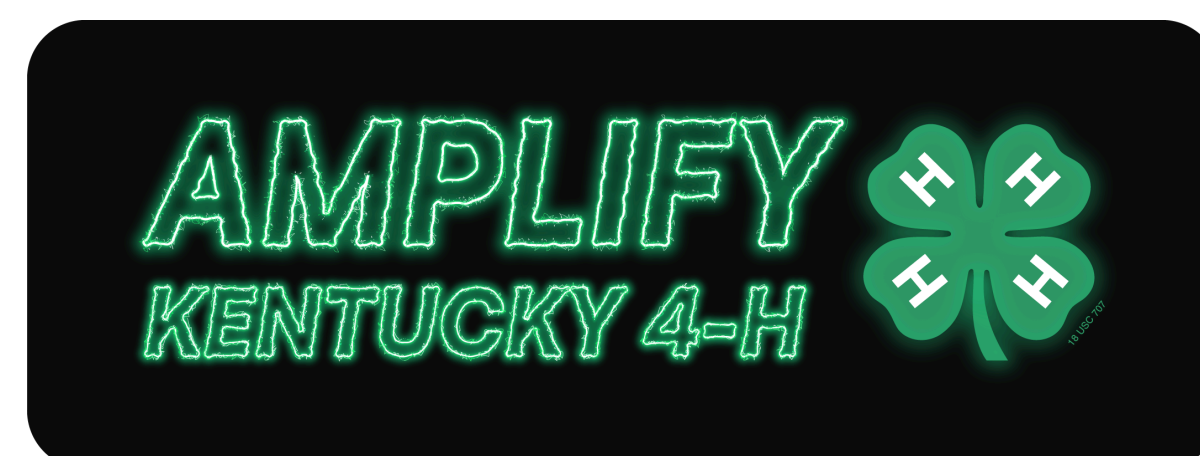
In this Issue:

4-H Camp 2025
Outdoor Adventure Camp
Lewis County 4-H Communications Contest
Lewis County 4-H/FFA Livestock Club
Lewis County 4-H Shooting Sports Club

**Lewis County Cooperative Extension Office**  
284 Second Street  
Vanceburg, KY 41179  
(606)796-2732

*Ashley Hunt*

**Lewis County Cooperative Extension Agent for 4-H Youth Development**  
ashley.mhunt@uky.edu  
(606)-796-2732





Lewis County

# 4-H CAMP 2025

JUNE 23-27



Learn new skills, make new friends, and experience a summer unlike any other!

**Who?:** Any youth in Lewis County that will turn 9 before June 23, 2025 OR is entering 4th grade in 2025. Campers must not turn 15 before June 23 to be eligible.



Youth 15-17 must apply to become a Counselor!

**Cost:** \$150 for campers. Junior Counselors (ages 16-17) will pay \$41. Scholarships are available via scholarship application. Payment in full is due by May 30, 2025.



Applications available starting Monday, February 3.

Contact the Lewis County Extension Office for questions at (606)796-2732.

**Applications and a \$25 deposit must be turned in by March 14th. Spots are limited!**





**Martin-Gatton**  
College of Agriculture,  
Food and Environment



**HIKE! EXPLORE! LEARN!**

# **OUTDOOR ADVENTURE CAMP**



**Get together with friends and  
learn outdoor survival skills!**

**Scan below for the  
application!**



**MAY 2-3, 2025  
STARTS AT 1 PM  
\$100 PER PERSON  
REGISTER WITH YOUR  
COUNTY 4-H AGENT**

**LAKE CUMBERLAND 4-H CAMP  
17500 KY-196  
NANCY, KY 42544**

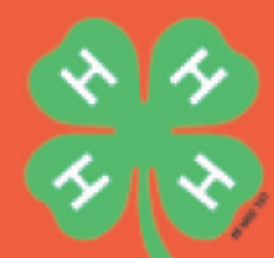
**OPEN FOR KIDS AGED 13 AND UP.  
THE TEAM OF SKILLED PROFESSIONALS ENSURE  
ALL KIDS ARE SAFE 24/7.**

**Cooperative  
Extension Service**

Agriculture and Natural Resources  
Family and Consumer Sciences  
4-H Youth Development  
Community and Economic Development

**MARTIN-GATTON COLLEGE OF AGRICULTURE, FOOD AND ENVIRONMENT**

Educational programs of Kentucky Cooperative Extension serve all people regardless of economic or social status and will not discriminate on the basis of race, color, ethnic origin, national origin, creed, religion, political belief, sex, sexual orientation, gender identity, gender expression, pregnancy, marital status, genetic information, age, veteran status, physical or mental disability or reprisal or retaliation for prior civil rights activity. Reasonable accommodation of disability may be available with prior notice. Program information may be made available in languages other than English. University of Kentucky, Kentucky State University, U.S. Department of Agriculture, and Kentucky Counties, Cooperating. Lexington, KY 40506



Disabilities  
accommodated  
with prior notificati



## *Lewis County 4-H*

# COMMUNICATIONS CONTEST

## Tuesday, April 15, 2025

Lewis County Central Elementary

6pm - Sign-In Begins

6:30 - Contest Begins

Awards presented following the conclusion of the last speech/demonstration and the tallying of scores.

Register by April 10 using the QR code or by calling the Lewis County Extension Office at 606-796-2732.

Youth are encouraged to dress in business casual clothing.

Planning guides for both speeches and demonstrations are available. Please call us to obtain one!



### **SPEECHES (any topic):**

- **9-13 year olds: 3-5 minute speech**
- **14-18 year olds: 5-7 minute speech**

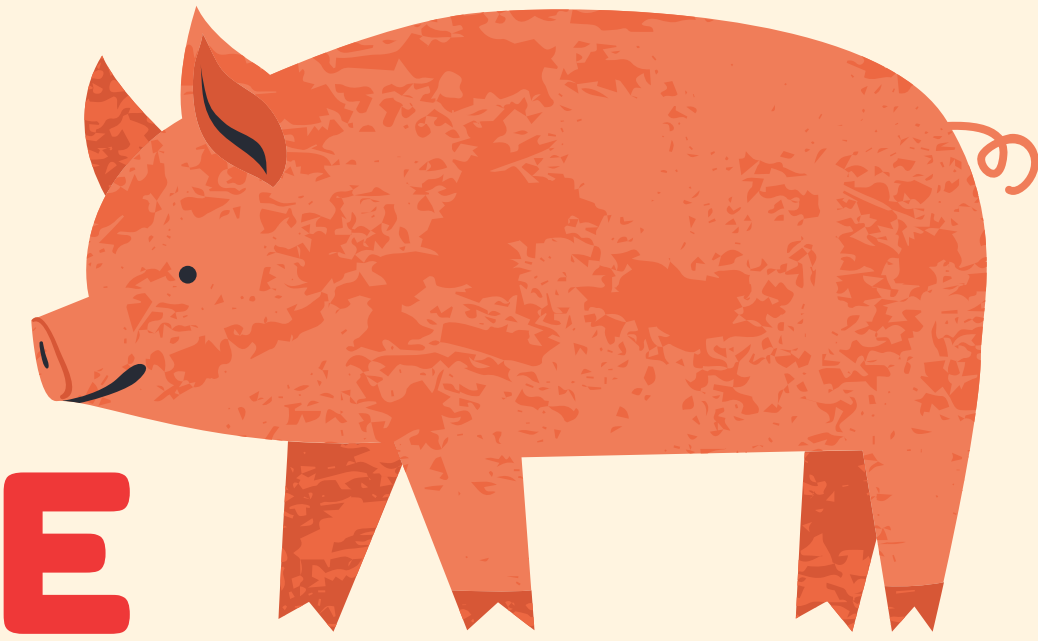
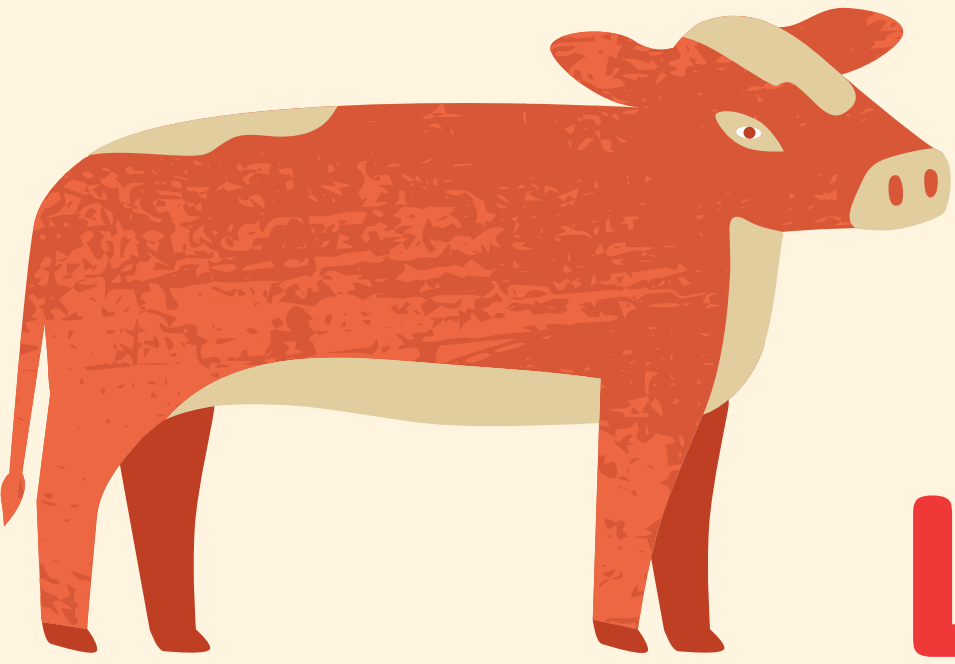
### **DEMONSTRATIONS:**

- **5-15 minutes**
- **Must include a posterboard or tri-fold poster**
- **Must fall into one of 6 categories**
  - **Agriculture & Animal Science**
  - **Expressive Arts (Visual and Performance)**
  - **Clothing and Textiles, Family and Consumer Sciences, and Foods**
  - **Health**
  - **Natural Resources & Shooting Sports**
  - **Science, Engineering, and Technology**



# LEWIS COUNTY 4-H/FFA

## LIVESTOCK CLUB



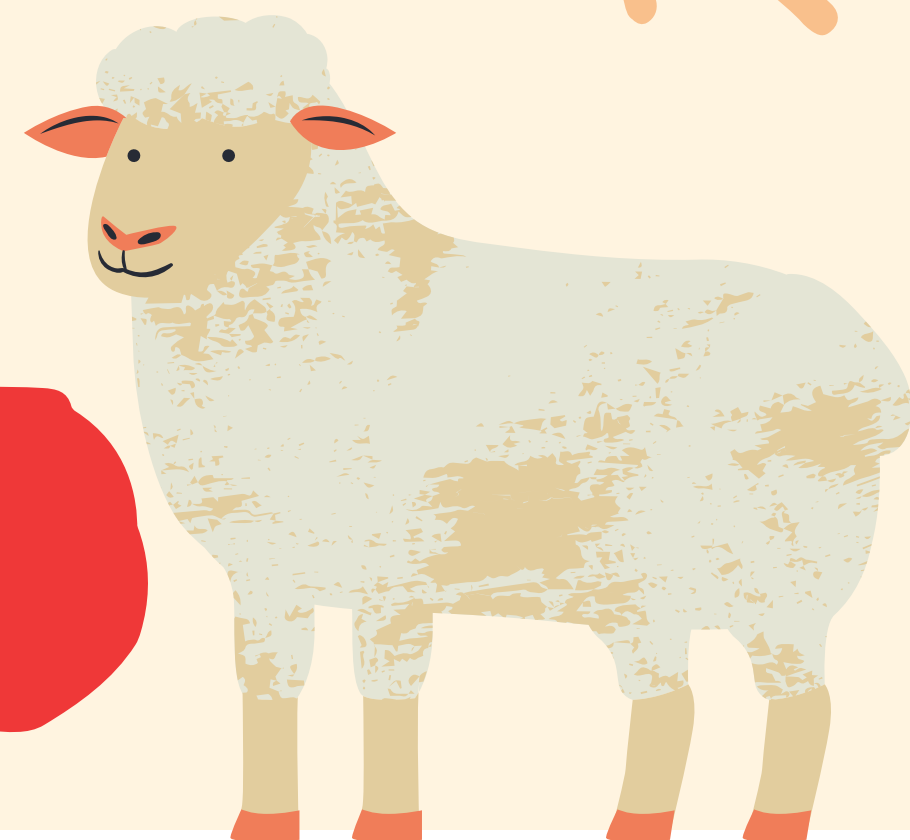
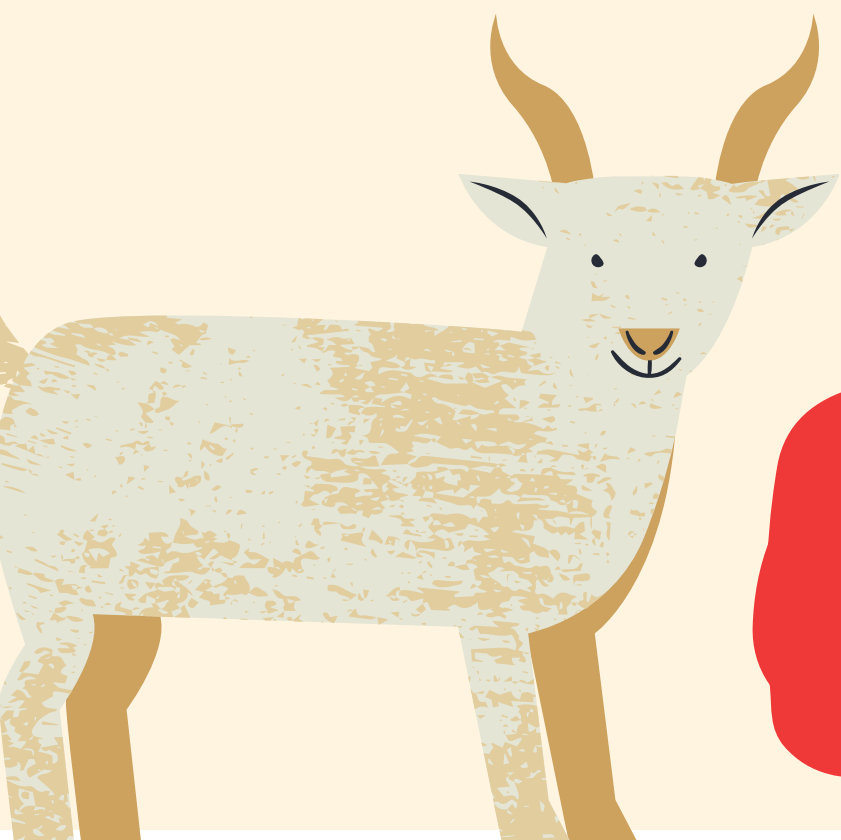
### LAST CHANCE TO JOIN!!!

**MARCH 31 AT 6:00PM  
AT THE LEWIS COUNTY  
EXTENSION OFFICE**

**LEARN ABOUT  
LIVESTOCK,  
GAIN  
HANDLING  
SKILLS, AND  
COMPETE IN  
SHOWS!**

**AGES  
5-21**

**CALL THE LEWIS COUNTY EXTENSION  
OFFICE FOR QUESTIONS!  
(606)796-2732**





Youth Ages 9-18  
as of Jan 1, 2025!

LEWIS COUNTY 4-H  
**SHOOTING**  
SPORTS  
**CLUB**



**Informational Meeting:**

Thursday, March 20th at 6pm at the Lewis County Extension Office (284 Second Street, Vanceburg, KY 41179).  
For questions, please call 606-796-2732

This meeting is for new AND returning club members! You do not have to own your own firearm to participate!

**DO NOT BRING FIREARMS TO THIS MEETING**



Learn safe firearm handling, how to shoot, and have the chance to compete in local and state competitions!



## Long form Non-discrimination Policy

The Martin-Gatton College of Agriculture, Food and Environment is an Equal Opportunity Organization with respect to education and employment and authorization to provide research, education information and other services only to individuals and institutions that function without regard to economic or social status and will not discriminate on the basis of race, color, ethnic origin, national origin, creed, religion, political belief, sex, sexual orientation, gender identity, gender expression, pregnancy, marital status, genetic information, age, veteran status, physical or mental disability or reprisal or retaliation for prior civil rights activity.

Reasonable accommodation of disability may be available with prior notice. Program information may be made available in languages other than English.

Inquiries regarding compliance with Title VI and Title VII of the Civil Rights Act of 1964, Title IX of the Educational Amendments, Section 504 of the Rehabilitation Act and other related matter should be directed to Equal Opportunity Office, Martin-Gatton College of Agriculture, Food and Environment, University of Kentucky, Room S-105, Agriculture Science Building, North Lexington, Kentucky 40546, the UK Office of Institutional Equity and Equal Opportunity, 13 Main Building, University of Kentucky, Lexington, KY 40506-0032 or US Department of Agriculture, Office of the Assistant Secretary for Civil Rights, 1400 Independence Avenue, SW, Washington, D.C. 20250-9410.

---

*Visit the [CES Program and Staff Development website](#) for additional guidance.*

*Questions may be directed to Stacy Miller at [Stacy.miller@uky.edu](mailto:Stacy.miller@uky.edu) or (859) 257-1727.*